

**evaporative cooler installations
upstream of filterhouse**



GE Frame 6 in Turkey



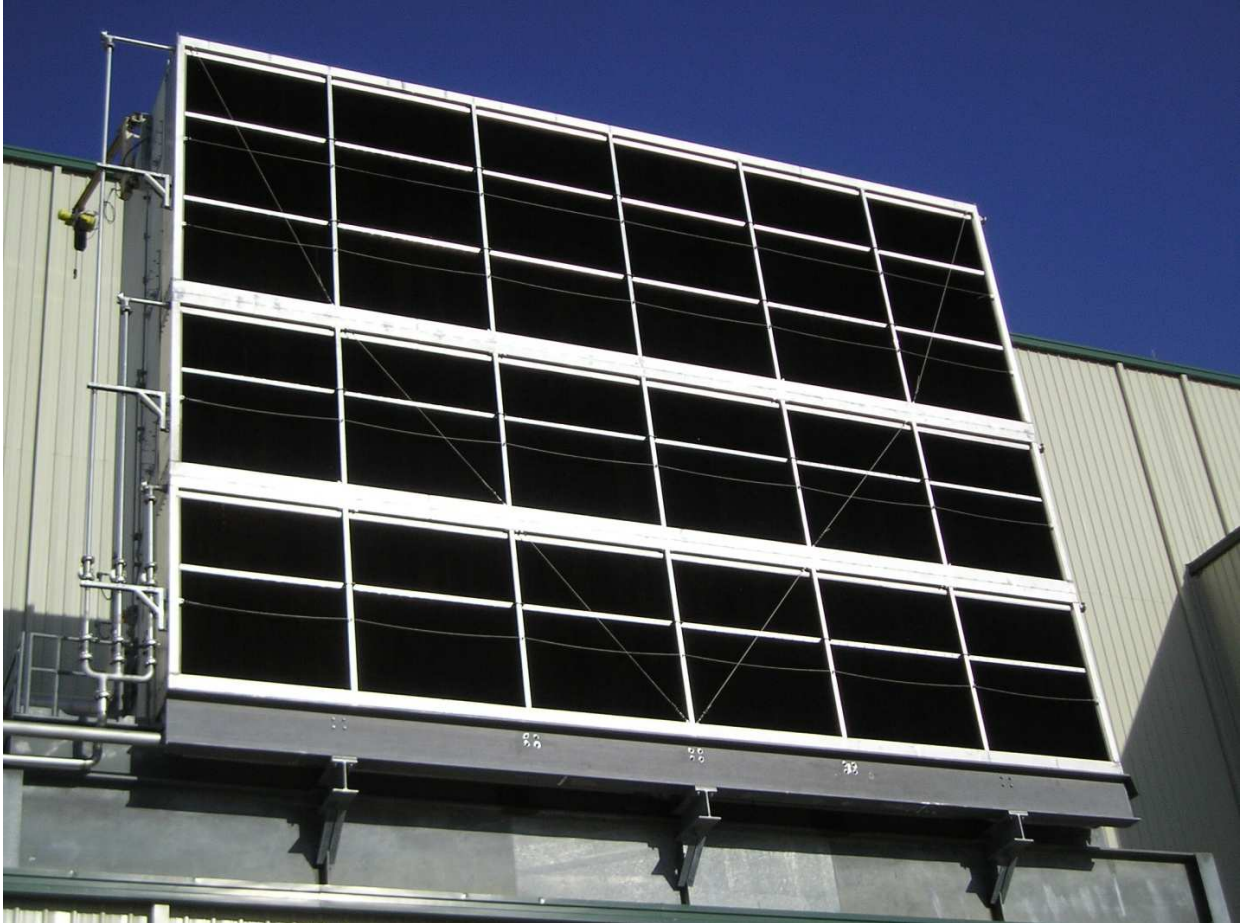
Siemens V 94 in Santa Rita/ Philippines



Energetica Kladno/ Czech Republic



GE Frame 9E in Marcus Hook/ USA



GE Frame 9E in Fourney/ USA



Alstom Frame 6 in Sohar/ Oman



GE Frame 6 at NEC/ Sudan



GE Frame 6 incl. cladding at Sohar/ Oman



ABB gas turbine in Chania/ Greece

(previous cooler design with framed evaporative media)

Design considerations concerning upstream position of evaporative cooler

- filter cartridges or filter bags should be made of premium synthetic media
- evaporative media act's in operation as additional filter grade F6
- pulse clean systems may be switched of
- easy and quick installation compared to integration of cooler downstream the filter sections
- only minor modifications on existing filter house necessary
- weather hoods can be removed
- if evaporative media is disassembled during colder periods the droplet separators act as rain and weather protection for the filters

Munters GmbH

i.V. Dipl.Ing. Andreas Hamacher

